

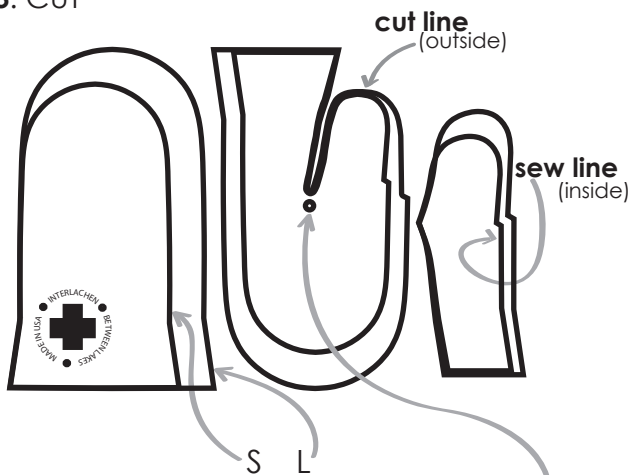
STEP 1: MEASURE HAND
(as shown here)



STEP 2: CHOOSE SIZE

SIZE	S	L
HAND inches	6.5-8	8.5-10

STEP 3: CUT



Follow line around entire piece carefully.
Cut along **outside** edge of line.
For size **large** cut to center of circle on palm.

STEP 4: SEW

Stitch panels together along inside printed line (3/8" seam allowance).

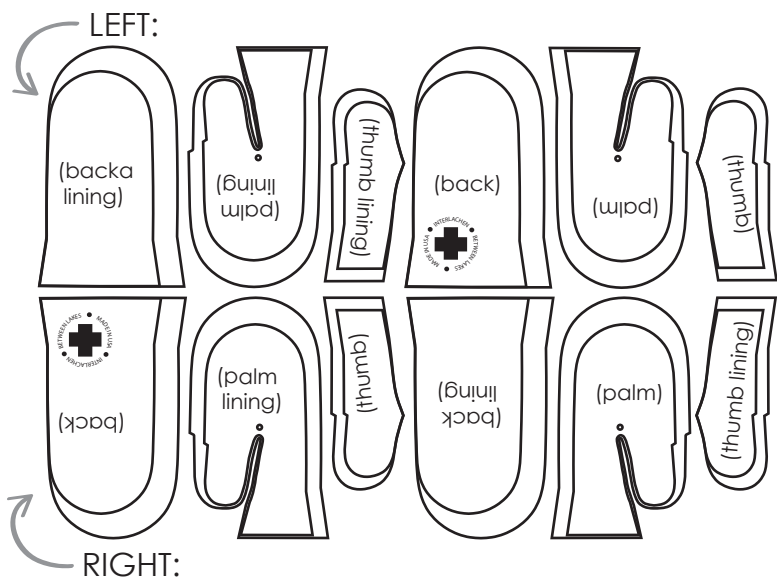


Sew right sides together

(Or wrong sides together depending on desired print).

Match letter to like letter

(Sew A seam to A seam, etc).

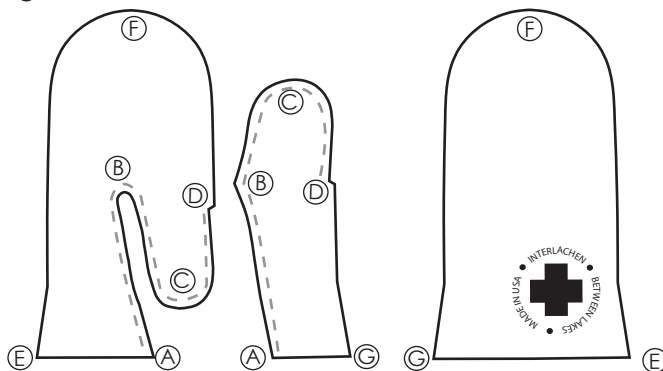


RIGHT:

SEWING INSTRUCTIONS

MITTENS

Begin with **RIGHT** mitten



1. Stitch **palm to thumb** (A B C D)

(Follow stitch line as drawn above).

2. Stitch **palm/thumb to back** (E F G)

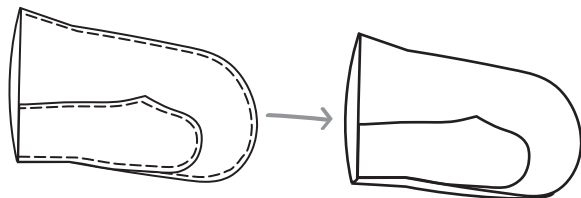
3. Repeat for all pieces of **right lining**

4. Turn **mitten** right side out

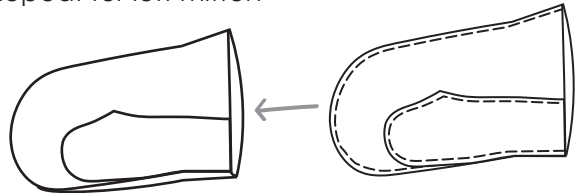
(raw edges toward inside).

5. Insert **lining** into **mitten**

(inside of mitten should have finished seams).

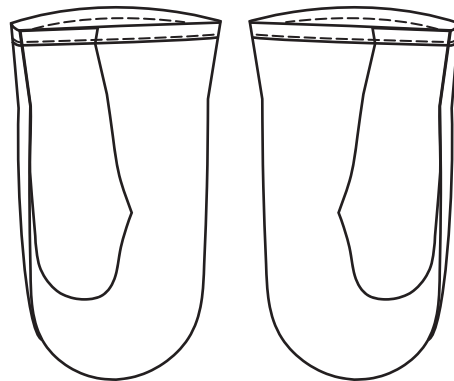


6. Repeat for left mitten



7. Finish top edge with 1/2" double turned hem.

(inside out view)



8. Turn right side out and wear.

INTERLACHEN

PRINTED PATTERNS

SURPLUS WOOL

PLEASE READ BEFORE HANDLING BLANKET

WARNING: Ink is not heat set. Please follow instructions.

Surplus blankets may need to be washed before using. Please follow instructions.

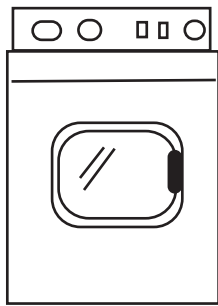
Surplus blankets may have a faint oil scent, this will fade.

Surplus blankets may produce a large amount of lint, this is normal.

Follow below heat set instructions when using product as a blanket.

HEAT SET choose to keep printed lines, OR wash to fade

INK:

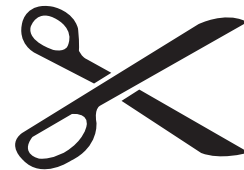


OR



1. Heat-treat ink before washing
(Using clothing dryer or iron).
2. In dryer, dry on high setting for 20 minutes
(Note, blanket will produce a lot of lint in dryer).
3. With iron, press printed areas for 90 seconds
at 300F degrees.
4. Cut & Sew normally
(See sewing instructions on reverse).

NO INK:



1. Cut & Sew normally
(See sewing instructions on reverse).
2. Skip to wash as below

WASH in machine OR by hand

MACHINE:



1. Machine wash cold, delicate cycle
(Note, blanket will produce a lot of lint in washer).
2. Hang Dry
(Or lie flat).
3. Do not use dryer when blanket is wet
(Blanket will shrink out of proportion).

HAND WASH:



1. Hand wash warm
(light detergent).
2. Hang Dry
(Or lie flat).
3. Do not use dryer when blanket is wet
(Blanket will shrink out of proportion).